



# APPROVAL SHEET

PRODUCT : DC/DC S.P.S

CUSTOMER : 德勝 CUSTOMER PART NO. : \_\_\_\_\_

VENDOR : YCL VENDOR PART NO. : DHR-004A

<b>APPROVED BY</b>	
<b>德勝</b>	<b>YCL</b>
	Jackie Tsai Sundi Lin

**YCL ELECTRONICS CO.,LTD.**

**卓智電子股份有限公司**

**HEAD OFFICE & FACTORY**

**No.95,Feng Jen Road,**

**Feng Shan City,Kaohsiung,**

**Taiwan,R.O.C.**

**高雄縣鳳山市鳳仁路95號**

**TEL : 886-7-7458587**

**FAX : 886-7-7459120**





卓智電子股份有限公司

YCL ELECTRONICS CO., LTD.

Tel.: +886-(0)7-745-8587 Fax.: +886-(0)7-745-9120

830 高雄縣鳳山市鳳仁路 95 號 <http://www.ycl.com.tw/>

No.95, Feng Jen Road, Feng Shan City 830, Kaohsiung County, Taiwan



DHR004A 修改電源特性與德勝系統有關機瞬斷情形，作以下修正與說明：

A. 修正材料如下：

- a. R61 修正 LAYOUT (For power good)
- b. C41：47uF 變更為 220uF
- c. C45：22uF 變更為 120uF
- d. C30：追加並聯 4.7uF

B. 主要修改特性：

瞬斷發生同時輸入電流原約 0.3A~0.4A，突然上升到 2A 的情況，因此以減緩 POWER 開關時間，使 turn on delay 拉長，並延長 hold up time.

可以解決不規則開關機，所造成 power 未完全開機或關機的錯誤訊號訊息，而形成 power down.

C. A 機與 B 機作 Turn/off 切換時，務必確定 power good LED 已亮，在作另一台關機的動作.

D. 電源線插上 POWER 作插拔動作時有瞬斷問題：

暫時對策：將輸出接地以接線方式接到外殼

永久對策：後續生產則修改 PCB

E. 測試規範：

產線以第二版客戶系統測試

- a. A 機開關 5 次，判斷瞬斷問題。
- b. B 機開關 5 次，判斷瞬斷問題。
- c. A/B 交換切換 5 次，判斷瞬斷問題。

插拔測試由台灣品管以客戶第三板系統插拔 5 次，判斷瞬斷問題。

---

Head Office (KAOHSIUNG)

TEL: 886-7-7458587

FAX: 886-7-7459120

E-MAIL: [Sales@ycl.com.tw](mailto:Sales@ycl.com.tw)



卓智電子股份有限公司

YCL ELECTRONICS CO., LTD.

Tel.: +886-(0)7-745-8587 Fax.: +886-(0)7-745-9120

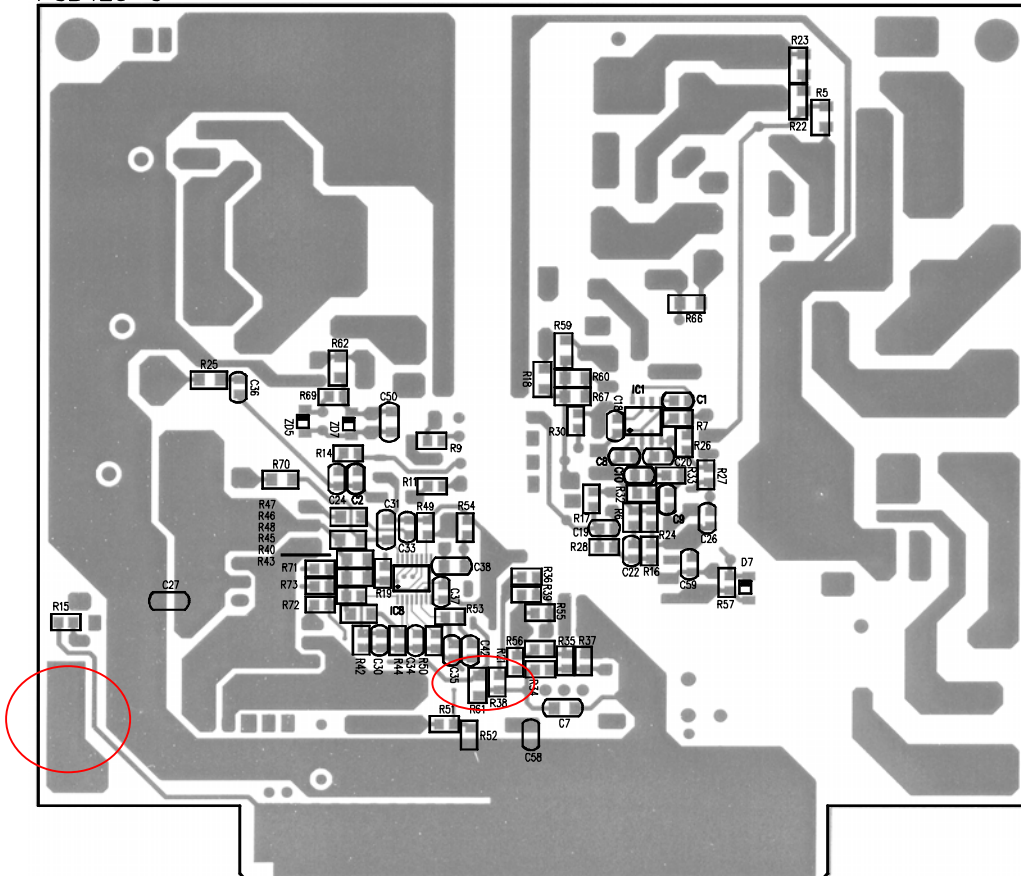
830 高雄縣鳳山市鳳仁路 95 號 <http://www.ycl.com.tw/>

No.95, Feng Jen Road, Feng Shan City 830, Kaohsiung County, Taiwan



### Silkscreen Bottom

PCB420-C



Head Office (KAOHSIUNG)

TEL: 886-7-7458587

FAX: 886-7-7459120

E-MAIL: [Sales@ycl.com.tw](mailto:Sales@ycl.com.tw)



# 卓智電子股份有限公司

## YCL ELECTRONICS CO., LTD.

Tel.: +886-(0)7-745-8587 Fax.: +886-(0)7-745-9120

830 高雄縣鳳山市鳳仁路 95 號 <http://www.ycl.com.tw/>

No.95, Feng Jen Road, Feng Shan City 830, Kaohsiung County, Taiwan



Customer :

Model : DHR-004A

S/N : S0434100006 | P/N : | Date Code : 0142

Date : 01/13/2006 | Time : 13:35:48

Testing Time : 40.76 Sec | Result : PASS

TestItem Description	CH	Min	Max	Value	Result
FU LOAD[ 48V @ 17.00A] (100%)	1	4.800	5.100	4.954	PASS
FU LOAD[ 36V @ 17.00A] (100%)	1	4.800	5.100	4.956	PASS
FU LOAD[ 72V @ 17.00A] (100%)	1	4.800	5.100	4.954	PASS
NO LOAD[ 36V @ 0.00A] (0%)	1	4.800	5.200	5.054	PASS
NO LOAD[ 48V @ 0.00A] (0%)	1	0.000	5.200	5.054	PASS
NO LOAD[ 72V @ 0.00A] (0%)	1	0.000	5.200	5.054	PASS
OVP[ 48V @ 3.40A] (20%)	1	0.000	5.200	5.018	PASS
Line Regulation [ 36V]	1	4.800	5.200	4.954	PASS
Line Regulation [ 72V]	1	4.800	5.200	4.954	PASS
Line Regulation [ 36V ~ 72V] (%)	1	0.000	2.000	0.000%	PASS
Load Regulation [ 48V] (%)	1	0.000	3.000	0.801%	PASS
輸入電流 [ 48V] (A)	--	0.000	2.700	2.607	PASS
Efficiency [ 48V] (%)	--	65.000	100.000	67.202%	PASS
O.L.P. [ 48V / 100% ~ 200% ] (%)	1	110.000	200.000	121.604%	PASS
O.L.P. [ 72V / 100% ~ 200% ] (%)	1	110.000	200.000	121.387%	PASS
Short Circuit [ 48V] (V)	1	0.000	1.000	0.468	PASS
Short Circuit [ 48V] (W)	--	0.000	30.000	2.833	PASS
Drop Out (V)	--	0.000	33.000	27.000	PASS

Ripple/noise [48V/ 17.00A] 100%

80 mVPP

### Head Office (KAOHSIUNG)

TEL: 886-7-7458587

FAX: 886-7-7459120

E-MAIL: [Sales@ycl.com.tw](mailto:Sales@ycl.com.tw)



# 卓智電子股份有限公司

## YCL ELECTRONICS CO., LTD.

Tel.: +886-(0)7-745-8587 Fax.: +886-(0)7-745-9120

830 高雄縣鳳山市鳳仁路 95 號 <http://www.ycl.com.tw/>

No.95, Feng Jen Road, Feng Shan City 830, Kaohsiung County, Taiwan



Customer :

Model : DHR-004A

S/N : S0434100014 | P/N : | Date Code : 0142

Date : 01/13/2006 | Time : 13:39:20

Testing Time : 38.99 Sec | Result : PASS

Test Item Description	CH	Min	Max	Value	Result
FU LOAD[ 48V @ 17.00A] (100%)	1	4.800	5.100	4.982	PASS
FU LOAD[ 36V @ 17.00A] (100%)	1	4.800	5.100	4.980	PASS
FU LOAD[ 72V @ 17.00A] (100%)	1	4.800	5.100	4.982	PASS
NO LOAD[ 36V @ 0.00A] (0%)	1	4.800	5.200	5.074	PASS
NO LOAD[ 48V @ 0.00A] (0%)	1	0.000	5.200	5.074	PASS
NO LOAD[ 72V @ 0.00A] (0%)	1	0.000	5.200	5.074	PASS
OVP[ 48V @ 3.40A] (20%)	1	0.000	5.200	5.046	PASS
Line Regulation [ 36V]	1	4.800	5.200	4.982	PASS
Line Regulation [ 72V]	1	4.800	5.200	4.982	PASS
Line Regulation [ 36V ~ 72V] (%)	1	0.000	2.000	0.000%	PASS
Load Regulation [ 48V] (%)	1	0.000	3.000	0.836%	PASS
輸入電流 [ 48V] (A)	--	0.000	2.700	2.640	PASS
Efficiency [ 48V] (%)	--	65.000	100.000	66.811%	PASS
O.L.P. [ 48V / 100% ~ 200% ] (%)	1	110.000	200.000	133.202%	PASS
O.L.P. [ 72V / 100% ~ 200% ] (%)	1	110.000	200.000	132.180%	PASS
Short Circuit [ 48V] (V)	1	0.000	1.000	0.492	PASS
Short Circuit [ 48V] (W)	--	0.000	30.000	7.682	PASS
Drop Out (V)	--	0.000	36.000	27.000	PASS

Ripple/noise [48V/ 17.00A] 100%

80 mVPP

### Head Office (KAOHSIUNG)

TEL: 886-7-7458587

FAX: 886-7-7459120

E-MAIL: [Sales@ycl.com.tw](mailto:Sales@ycl.com.tw)

## 工程文件變更申請書〔 ECR 〕

變更申請書編號：RDER 0620002 發行日期：2005 年 月 日

文件名稱	工程規格書	文件編號	RDSP DHR004A
發行部門	開發二課	申請部門	開發二課

**申請理由或依據（申請部門）**

1. 變更原因: 因配合客戶系, 改善瞬間斷電而修改變更

2. 變更內容:

C41 原 47Uf/50V 刪除變更爲 P/N:A14000230-1381 無鉛 C 電解 SXE 220 uF 35v 8\*20

C45 原 22Uf/16V 刪除變更爲 P/N:A14000229-1381 無鉛 C 電解 SXE 120 uF 6.3v 5\*11.5

C30 原 104K 刪除變更爲 P/N:A17000401-ZZZZ 無鉛 SMDC 1206 Y5V 475Z 4.7 uF 25V

3. 版次標籤原 ROA 變更爲 P/N:J00000149-0464 ROB

PCB 420 B → PCB 420 C

4. 以上呈核后, 以進行修改工程規格書

陳炳煌

核准：

確認：

承辦：



**確認結果（文件發行部門）**

可

核准：

林香芬

安規確認：

確認：



承辦：

# 85Watts Open Frame Power Supply



## DHR-004A

### Feature:

- UL/CSA/TUV/CE safety meet.
- EMI/RFI meet VDE & FCC limit B.
- 85Watts in 152.4×110×40 mm Size.
- 2 Year Warranty.
- Size : 164.8×140×42.8mm.

### Specifications: typical at nominal line, full load at 25° C.

Input Specifications:	General Specifications:
<b>Input voltage:</b> -36 to -72Vdc	<b>Efficiency:</b> 65% typical at full load
<b>Input current:</b> 2.7A at 48 Vdc	<b>EMI/RFI:</b> VDE & FCC Class B Limits
<b>Output Specifications: (at 48Vdc Input)</b>	<b>Dielectric Withstand:</b> Input/output: 1500Vdc
<b>Output Rating:</b> Vo1:+5V/17A /Current Sharing	<b>*Safety Meet:</b> UL/CSA/TUV/CE
<b>Line Regulation:</b> ± 1%	<b>Switching frequency:</b> 50kHz typical
<b>Load Regulation:</b> ± 3% (Full to Half Load)	<b>Weight:</b> 450g
<b>Temperature Coefficient:</b> ± 0.05% / °C	<b>Environmental Specifications:</b>
<b>Ripple &amp; Noise:</b> Vo1: 100mVp-p max.	<b>Operating temperature:</b> 0 to +50°C
<b>Protections:</b> a. Over voltage protection b. Over power protection c. Short circuit protection d. Input reverse protection	<b>Storage temperature:</b> -20 to +85°C
	<b>Humidity:</b> 5 to 95 % RH non-condensing
	<b>Vibration:</b> 2.4G , 5 to 500Hz
	<b>Cooling:</b> Free air convection

### Note:

1. Vibration test: Three orthogonal axes, random vibration, 10 minutes for each axis.
  2. Maximum output power is 85W.
  3. At least 20% of load is required to obtain stable regulation.
- ★ Please refer the safety approval status on appendix 1, For latest safety approval status  
Please consult YCL or visit" [www.ycl.com.tw](http://www.ycl.com.tw)

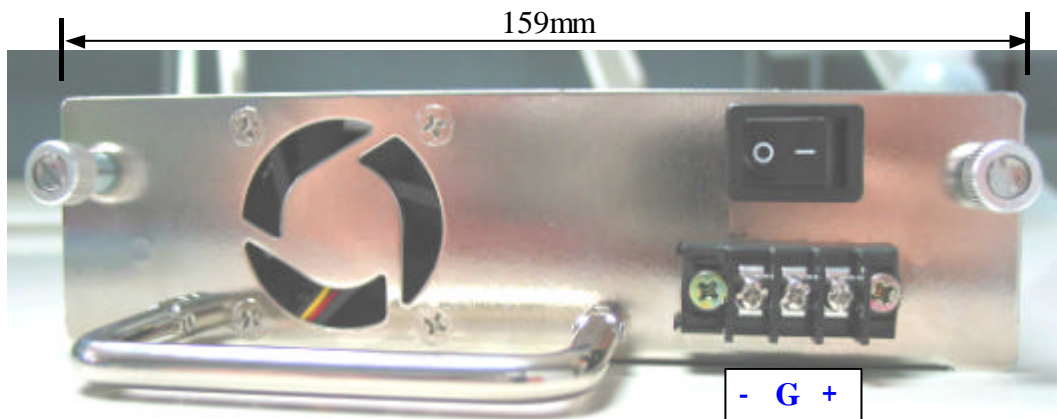
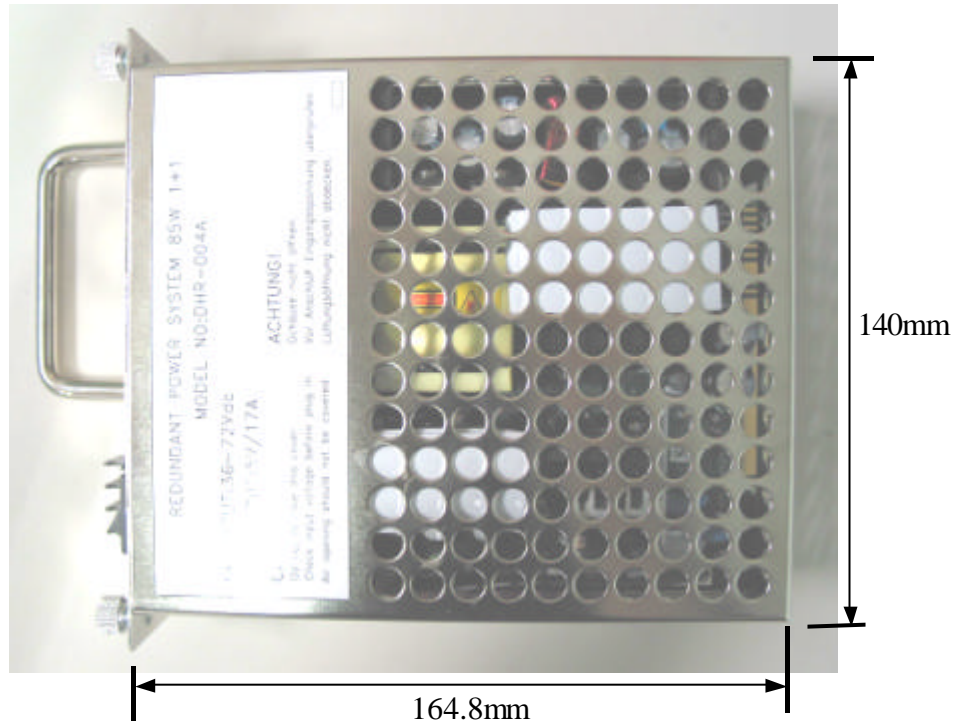


# 85Watts Open Frame Power Supply



## DHR-004A

**Dimensions:** mm  $\pm$  0.5mm

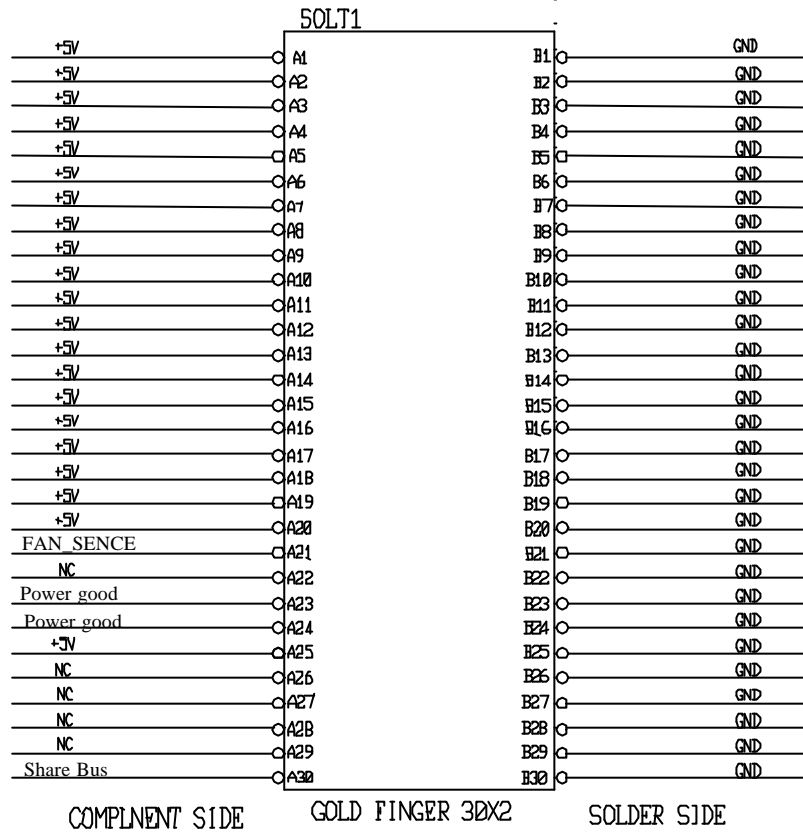


# 85Watts Open Frame Power Supply

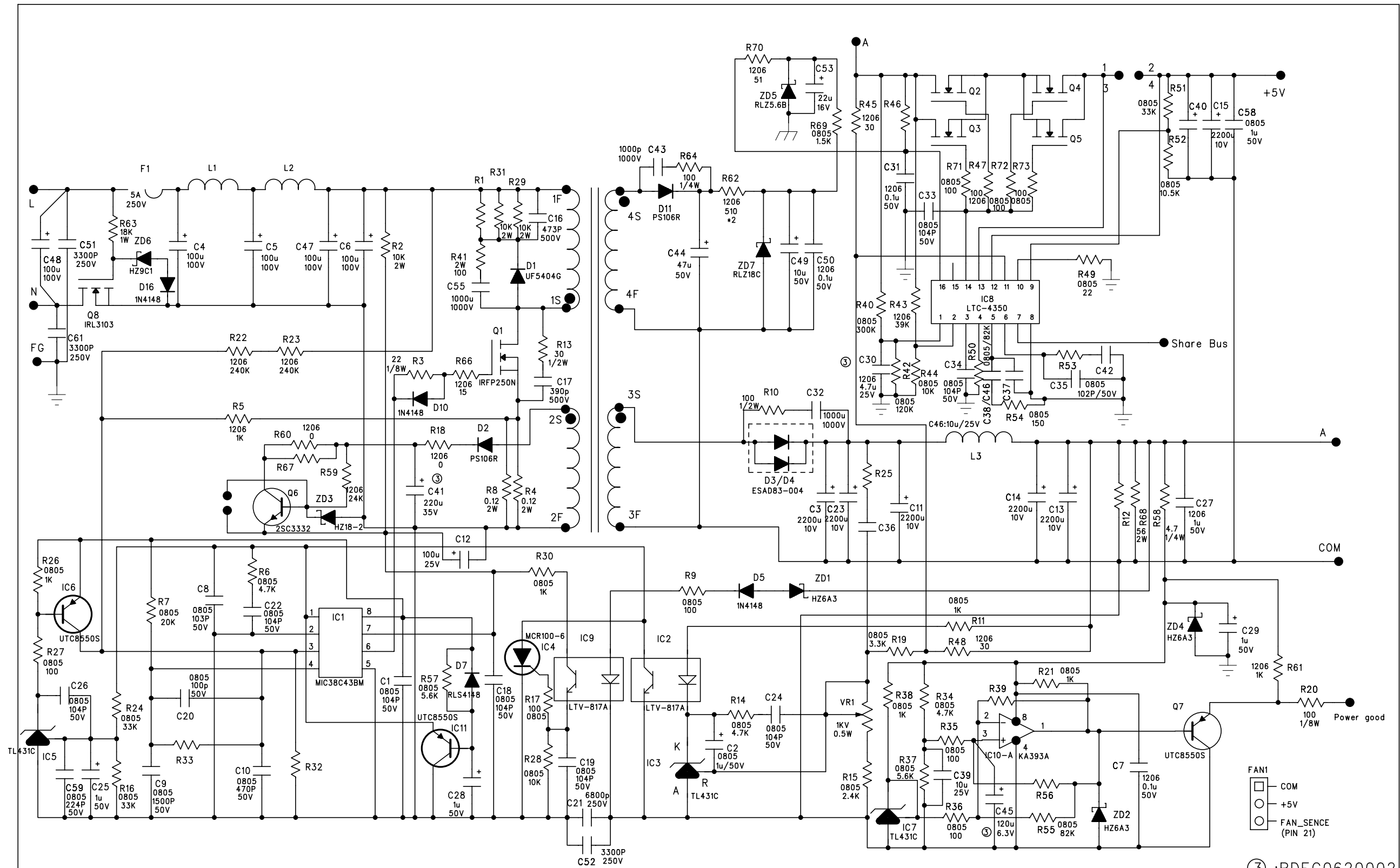


## DHR-004A

### POWER MODULE GOLD FINGER DEFINE



- DC Input connector is EVER P/N:8673-05N2,4 or equivalent.

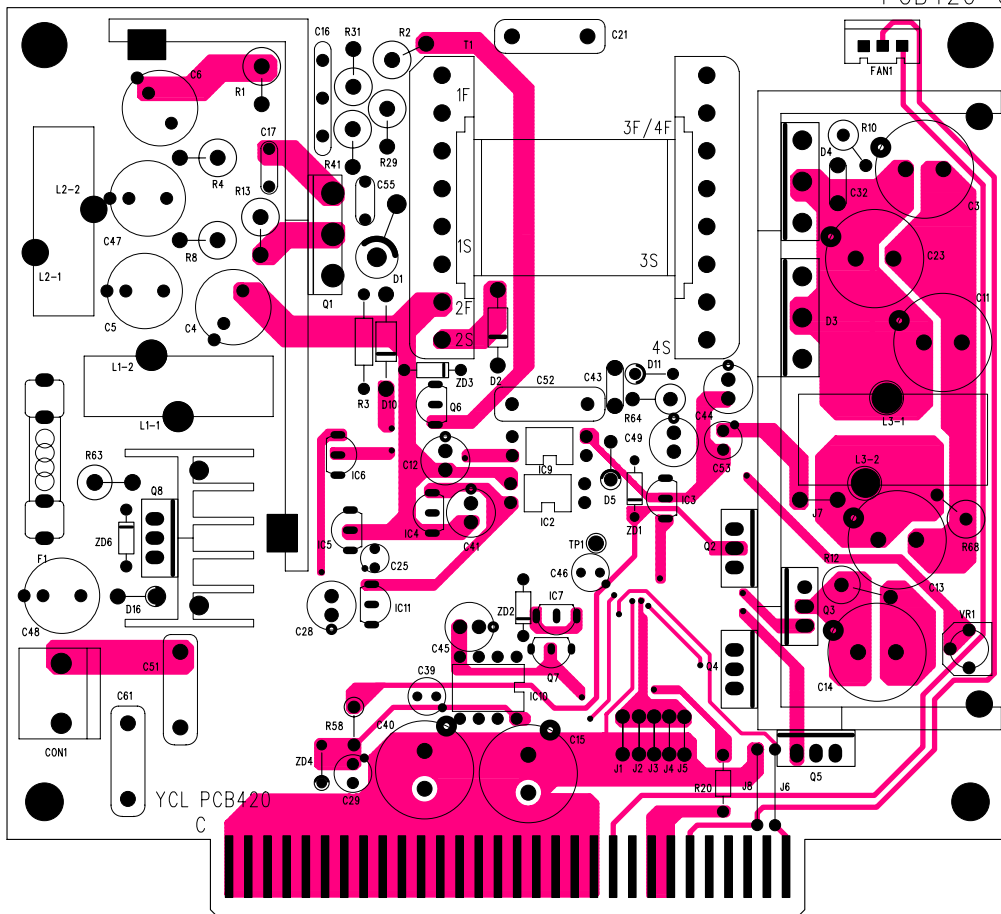


③ :RDEC0620002

APPROVED	CHECKED	PREPARED	YCL ELECTRONICS CO.,LTD.	
林秀芬	蔡佳紘	陳麗敏 吳珮勤	SIZE: A3	Document Number: DHR-004A.SCH
			DATE: 01/19/2006	REV: C
				OF

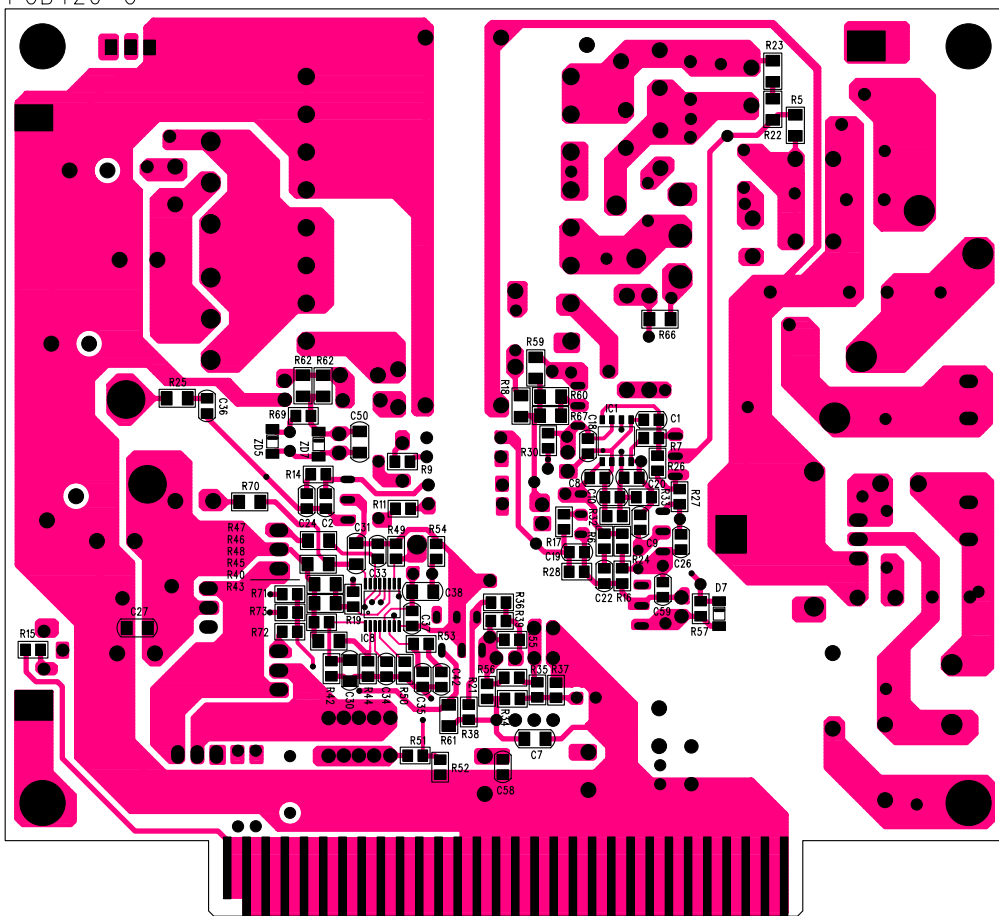
# Silkscreen Top

PCB420-C

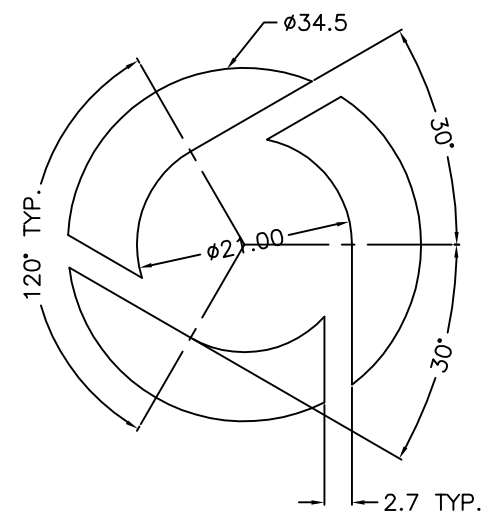
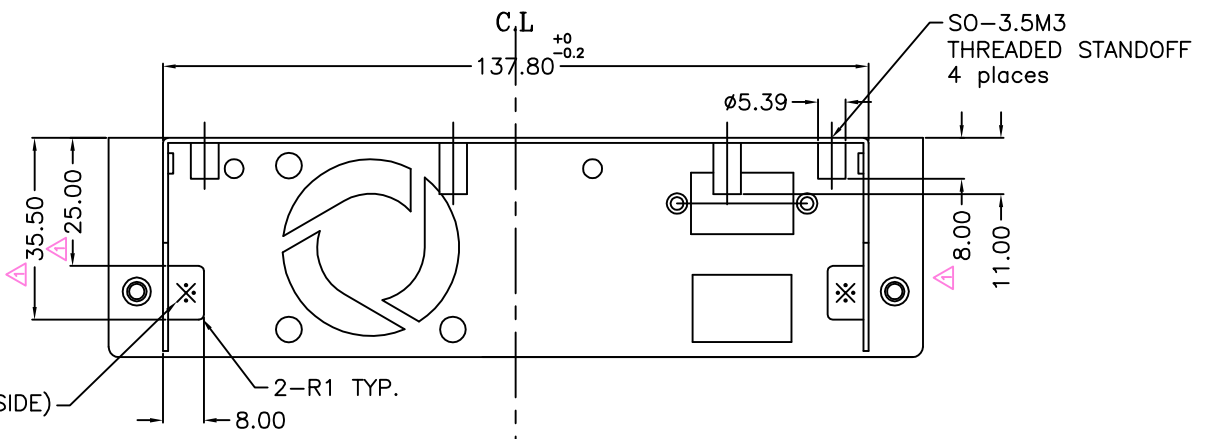


# Silkscreen Bottom

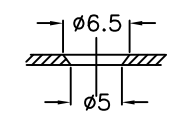
PCB420-C



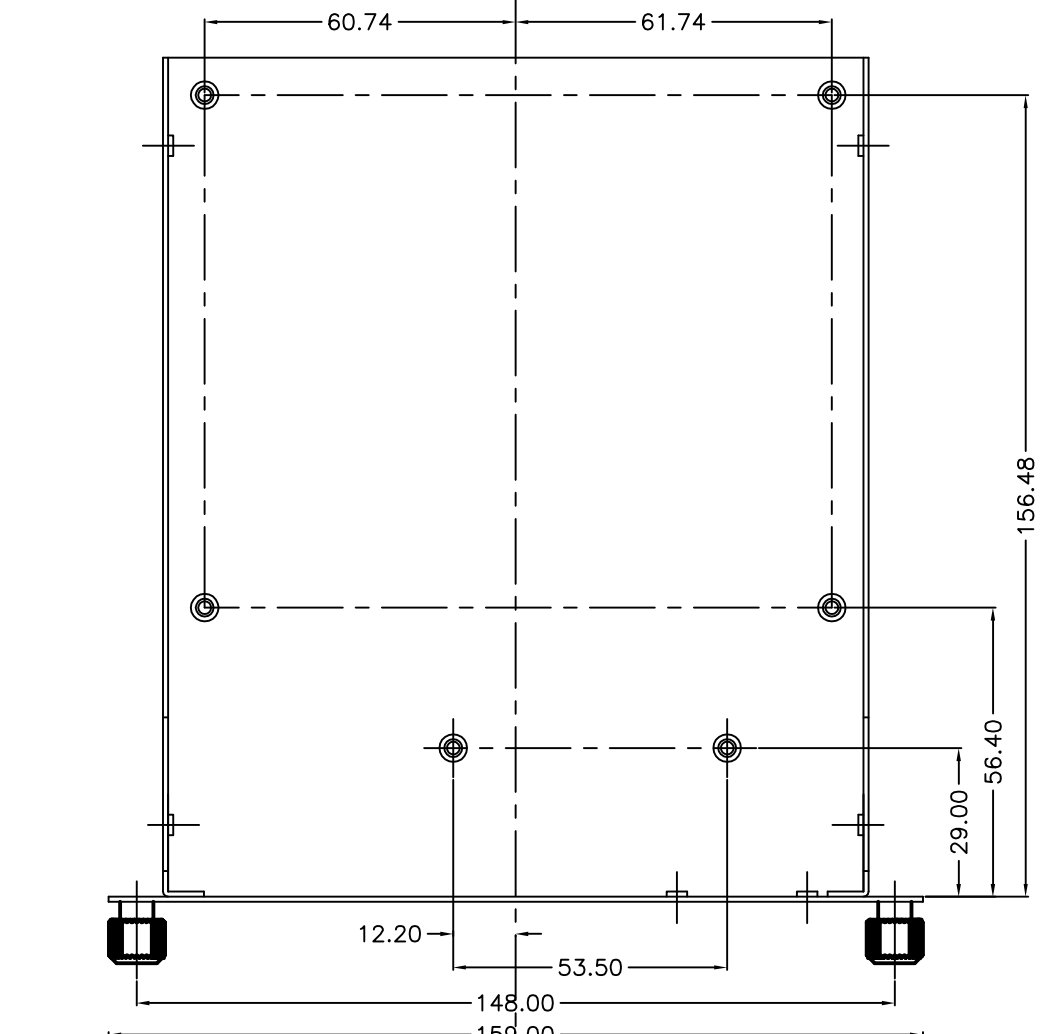
REV.	DESCRIPTION	DATE	REVISED BY
0	ORIGINAL	MAY.27,04'	Wu
1	MODIFY	NOV.26,04'	Wu



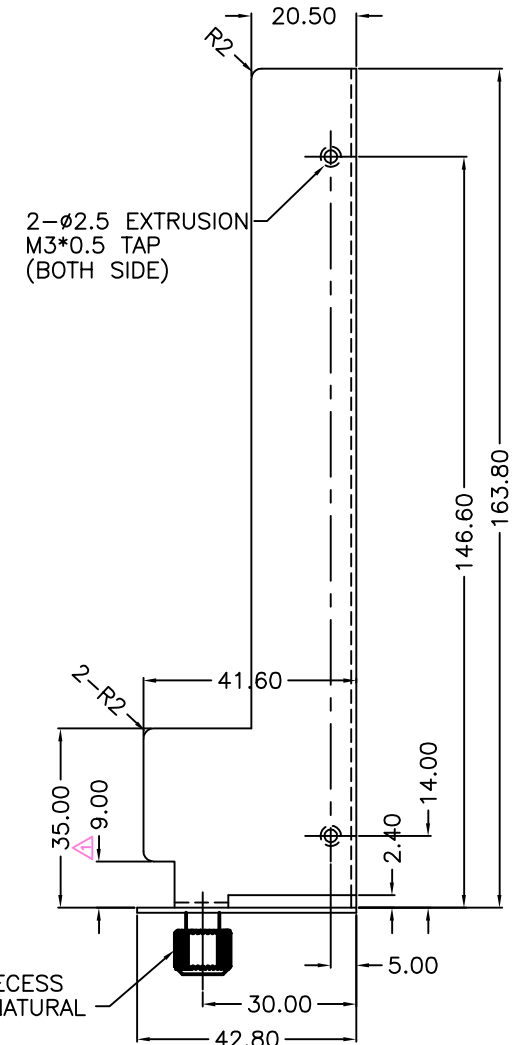
**DETAIL B**  
SCALE 2:1



**SECTION A-A**  
SCALE 2:1  
4 Places



CAPTIVE SCREW  
M3 SLOTTED RECESS  
KNOB FINISH: NATURAL



NOTES:  
1. REMOVES ALL BURRS AND SHARP EDGES.

MATERIAL	SPCC t=1.0	DWG. DATE	JAN.28,2004	A2	Q'TY	1
TREATMENT	NICKEL PLATING	DWG. NO.	ED-FDH-113		UNIT	mm
FINISHING		DWG. SHEET	1 OF 1			
ROUGHNESS		DWG. NAME	CHASSIS BK1020-0210		SCALE	
TOLERANCE	DIM. ± 0.2 ANGLE ± 0.3	TITLE				1 / 1

P/N: 302EDFDH113000

**YCP** ELECTRONICS CO., LTD.  
卓智電子股份有限公司

DESCRIPTION:	APPROVED	CHECKED	DESIGNED
DHR-004			Wu

PrintDate: 2006/01/19

PrintTime: 16:25:51

卓智電子股份有限公司  
YCL ELECTRONIC CO., LTD

BOM211

Page: 1 / 7

BILL OF MATERIAL

Parent-Parts No: DHR004A

Description: DHR-004A  
Specification:

Batch Qty: 1.00

Modified-Date: 2006/01/19

LastVersion: 3

Confirm: Yes

Seq	Item	Lvl	Child-Parts Number	Child-Parts Description I	Description II	Usage Qty	UM	Sp	LOT	Msrc	Location	ECN Number	Valid-Date	Invalid-Date
1	0010	1	0565400027	DHR-004A PCB零件加工組合		1.000000	PCS						2004/06/21	2019/12/31
2	0010	2	0565400027-PK	DHR-004A 包裝組合		1.000000	PCS						2004/06/21	2019/12/31
3	0010	3	63051EDPK21500	外箱	ED-PK-215	0.041667	PCS						2004/06/02	2019/12/31
4	0020	3	64071EDPK284A0	隔板	ED-PK-284-A	0.083333	PCS						2004/06/02	2019/12/31
5	0030	3	64071EDPK292A0	隔板	ED-PK-292-A	2.000000	PCS						2004/06/02	2019/12/31
6	0040	3	64071EDPK292B0	蜂巢隔板	ED-PK-292-B	0.083333	PCS						2004/06/02	2019/12/31
7	0050	3	64071EDPK292C0	隔板	ED-PK-292-C	1.000000	PCS						2004/06/02	2019/12/31
8	0060	3	61122EDPK227E0	抗靜電塑膠袋	ED-PK-227-E	1.000000	PCS						2004/06/02	2019/12/31
9	0020	2	0565400027-FA	DHR-004A PCB-Final Ass'y		1.000000	PCS						2004/06/21	2019/12/31
10	0010	3	27000000000090	SWITCH RF-1003-BB2-OH		1.000000	PCS						2004/06/09	2019/12/31
11	0020	3	44000000000010	EMI FILTER YK06T1 6A 125/250V		1.000000	PCS						2004/06/09	2019/12/31
12	0030	3	30200000003060	矽膠導熱墊 P300A-25*50*1.5t	單背膠	4.000000	PCS						2004/06/09	2019/12/31
13	0080	3	28900000000090	DC FAN 4010M05C NF4		1.000000	PCS						2004/06/21	2019/12/31
14	0088	3	90000000019090	標籤 ED-MBS-143 for DHR-004A	反銀龍上光 銀底黑字	1.000000	PCS						2004/06/23	2019/12/31
15	0095	3	302EDRDM073000	螺絲 皿 M5*10 TAPPING-B 鍍鎳	ED-RDM-073	4.000000	PCS				FOR FAN & CHASSIS		2004/06/21	2019/12/31
16	0100	3	23000000002420	CONNECT加線材16AWG 1015	ED-RDN-034 VW-1 105	1.000000	PCS						2004/06/23	2019/12/31
17	0110	3	23000000002430	線材16AWG 1015 紅色65mm	ED-RDN-034-1 VW-1 1	1.000000	PCS						2004/06/23	2019/12/31
18	0120	3	23000000002440	線材16AWG 1015 黑色80mm	ED-RDN-034-2 VW-1 1	1.000000	PCS						2004/06/23	2019/12/31
19	0130	3	23000000002450	線材16AWG 1015 黑色40mm	ED-RDN-034-3 VW-1 1	1.000000	PCS						2004/06/23	2019/12/31
20	0140	3	23000000002460	線材18AWG 1015 綠滾黃60mm	ED-RDN-034-4 VW-1 1	1.000000	PCS						2004/06/23	2019/12/31
21	0150	3	90000000019050	標籤 ED-MBS-144 for DHR-004A	10*10mm 反銀龍上光	1.000000	PCS						2004/06/23	2019/12/31
22	0160	3	90000000019060	標籤 ED-MBS-144-1 for DHR-004A	10*10mm 反銀龍上光	1.000000	PCS						2004/06/23	2019/12/31
23	0170	3	90000000019070	標籤 ED-MBS-144-2 for DHR-004A	5*5mm 反銀龍上光25	1.000000	PCS						2004/06/23	2019/12/31
24	0180	3	302EDFDH100B00	CHASSIS COVER BK1020-0110	ED-FDH-100-B	1.000000	PCS						2004/06/23	2019/12/31
25	0190	3	302EDFDH113000	CHASSIS BK1020-0210	ED-FDH-113	1.000000	PCS						2004/06/23	2019/12/31
26	0200	3	302EDFDH100D00	HANDLE D6.35/C70#6-32UNC	ED-FDH-100-D	1.000000	PCS						2004/06/23	2019/12/31
27	0210	3	302EDRDM084A00	SCREW BIND #6-32*6	ED-RDM-084-A	2.000000	PCS				FOR HANDLE & CHASSIS		2004/06/23	2019/12/31
28	0220	3	302EDRDM084B00	INTERNALLY ED-RDM-084-B M3.5	TOO THE D LOCK WAS	2.000000	PCS				FOR HANDLE & CHASSIS		2004/06/23	2019/12/31
29	0230	3	302EDRDM062A00	螺絲 BIND M3*6 SAE1018 鍍鋅	ED-RDM-062-A附GEAR	6.000000	PCS				FOR PCB*4 FILTER*2		2004/06/23	2019/12/31
30	0240	3	302EDRDM072B00	螺絲 皿 M3*5 鍍鎳	ED-RDM-072-B	4.000000	PCS				FOR CHASSIS & CHASSIS COVER		2004/06/23	2019/12/31
31	0250	3	302EDRDM055C00	螺絲 PAN M3*12 SAE1018 鍍鎳	附Spring Washer	2.000000	PCS				FOR TERMINAL HOLDER		2004/06/23	2019/12/31

Approved By: 林秀芬

Checked By: 蔡佳紘

Prepared By: 陳麗敏 吳珮勤

NO:RD-F-004-B

PrintDate: 2006/01/19

PrintTime: 16:25:51

卓智電子股份有限公司  
YCL ELECTRONIC CO., LTD

BOM211

Page: 2 / 7

BILL OF MATERIAL

Parent-Parts No: DHR004A

Description: DHR-004A

Batch Qty: 1.00

Modified-Date: 2006/01/19

LastVersion: 3

Confirm: Yes

Specification:

Seq	Item	Lvl	Child-Parts Number	Child-Parts Description I	Description II	Usage Qty	UM	Sp	LOT	Msrc	Location	ECN Number	Valid-Date	Invalid-Date
32	0255	/:3	28400000001310	端子座 T30 O S6403		1.000000	PCS						2004/06/25	2019/12/31
33	0260	/:3	0565400028	DHR-004 PCB零件加工組合		1.000000	PCS						2004/06/23	2019/12/31
34	0010	/:4	0565400028-FA	DHR-004 PCB-Final Ass'y		1.000000	PCS						2004/06/09	2019/12/31
35	0005	/:5	J00000149-0464	無鉛/毒標籤 產品版本 規格:ROB	10*5mm	1.000000	PCS					#3RDEC0620002	2004/06/24	2019/12/31
36	0008	/:5	90000000009670	標籤 Bar-Code 24*5mm	反銀龍上光銀底黑字	1.000000	PCS						2004/06/24	2019/12/31
37	0010	/:5	0565400028-MI	DHR-004 PCB-MI		1.000000	PCS						2004/06/09	2019/12/31
38	0020	/:6	170KA393A00000	IC KA393A 2% 8-DIP		1.000000	PCS			Y	IC10		2004/06/07	2019/12/31
39	0020	/:6	170KA393000000	IC KA393 5% 8-DIP		1.000000	PCS			*			2004/06/07	2019/12/31
40	0020	/:6	170LM393N00000	IC LM393N PDIP-8		1.000000	PCS			*			2004/06/07	2019/12/31
41	0030	/:6	10300000000300	R VR 0.5W 1K 3/4圈 6.8*6.8		1.000000	PCS			Y	VR1		2004/06/07	2019/12/31
42	0030	/:6	10300000000100	R VR 3362P-1-102 0.5W 1K	3/4圈 6.6*7 上面調整	1.000000	PCS			*			2004/06/07	2019/12/31
43	0040	/:6	A01000087-ZZZZ	無鉛R CARBON 1/8W 22	± 5%	1.000000	PCS				R3		2001/01/01	2015/12/31
44	0050	/:6	13001N41480000	DIODE FAST 1N4148 0.2A 75V	DO-35	3.000000	PCS			Y	D5 D10 D16		2004/06/07	2019/12/31
45	0050	/:6	13051N41480001	DIODE 1N4148 0.15A 75V Ifsm=1A	DO-35	3.000000	PCS			*			2004/06/07	2019/12/31
46	0050	/:6	13051N41480002-023	DIODE 1N4148 0.15A 75V Ifsm=2A	DO-35	3.000000	PCS			*			2004/06/07	2019/12/31
47	0060	/:6	29100000000920	FUSE 陶瓷管51SG 5A 250V 5*20mm		1.000000	PCS				F1		2004/06/07	2019/12/31
48	0070	/:6	29100000000090	FUSE CLIP SL002 5*20mm		2.000000	PCS				FOR F1		2004/06/07	2019/12/31
49	0100	/:6	1101G349332800	C 陶瓷 KX 3300pF Y1 20% 250V	P=10	2.000000	PCS			Y	C52 C21		2004/06/07	2019/12/31
50	0100	/:6	1101B159332700	C 陶瓷 CS13-E2GA332MYHS 3300pF	250V 12.5 ± 20% Y2	2.000000	PCS			*			2004/06/07	2019/12/31
51	0100	/:6	1101B251332700	C 陶瓷 HCYE2G332MAA 3300pF	250V 15 ± 20% Y2	2.000000	PCS			*			2004/06/07	2019/12/31
52	0100	/:6	1101B251332700-077	C 陶瓷 HCYE2G332MAA 3300pF	250V 13.5 ± 20% Y2	2.000000	PCS			*			2004/06/07	2019/12/31
53	0100	/:6	1101B251332700-243	C 陶瓷 5SF332MT252A77 3300pF	Y5V 250V ± 20% Y2	2.000000	PCS			*			2004/06/07	2019/12/31
54	0110	/:6	11031404228700	C 電解 LZG 2200uF 10V 12.5*20	± 20% 105	6.000000	PCS				C3 C23 C11 C14 C13 C15		2004/06/07	2019/12/31
55	0120	/:6	281000000003780	CONNECTOR 250PS-03 3PIN	P=2.5	1.000000	PCS				FOR FAN1		2004/06/07	2019/12/31
56	0130	/:6	28100000000290	CONNECTOR 8673-03N2 11.88*17.5	P=3.96	1.000000	PCS				FOR CON1		2004/06/07	2019/12/31
57	0140	/:6	1300PS106R0000	DIODE FAST PS106R 1A 600V	DO-41	2.000000	PCS			Y	D2 D11		2004/06/07	2019/12/31
58	0140	/:6	1300FR10500000	DIODE FAST FR105 1A 600V DO-41		2.000000	PCS			*			2004/06/07	2019/12/31
59	0150	/:6	11038624107700	C 電解 SR 100uF 100V 10*20	± 20% 85	5.000000	PCS				C48 C4 C5 C47 C6		2004/06/07	2019/12/31
60	0160	/:6	1300UF5404G000	DIODE FAST UF5404G 400V 3A	DO-201AD	1.000000	PCS			Y	D1		2004/06/07	2019/12/31
61	0160	/:6	1300UF54040000	DIODE FAST UF5404 400V 3A		1.000000	PCS			*			2004/06/07	2019/12/31
62	0170	/:6	11035094105700	C 電解 ST 1uF 50V 4*7	± 20% 105	3.000000	PCS			Y	C25 C28 C29		2004/06/07	2019/12/31

Approved By: 林秀芬

Checked By: 蔡佳紘

Prepared By: 陳麗敏 吳珮勤

NO:RD-F-004-B



PrintDate: 2006/01/19

PrintTime: 16:25:51

卓智電子股份有限公司  
YCL ELECTRONIC CO., LTD

BOM211

Page: 3 / 7

BILL OF MATERIAL

Parent-Parts No: DHR004A

Description: DHR-004A

Batch Qty: 1.00

Modified-Date: 2006/01/19

LastVersion: 3

Confirm: Yes

Specification:

Seq	Item	Lvl	Child-Parts Number	Child-Parts Description I	Description II	Usage Qty	UM	Sp	LOT	Msrc	Location	ECN Number	Valid-Date	Invalid-Date
63	0170	:/:6	11035459105800	C 電解 MS7 1uF 50V 4*7 20%		3.000000	PCS			*			2004/06/07	2019/12/31
64	0180	:/:6	11035319476800	C 電解 KME 47uF 50V 6.3*11		1.000000	PCS			Y	C44	#3RDEC0620002	2004/06/07	2019/12/31
65	0180	:/:6	11034319476800	C 電解 KME 47uF 35V 6.3*11		2.000000	PCS			*			2004/06/07	2019/12/31
66	0180	:/:6	A14000032-0089	無鉛C電解 TK 47uF 6.3*11	50V ± 20% 105	2.000000	PCS			*		RDER0520077	2001/01/01	2015/12/31
67	0183	:/:6	A14000230-1381	無鉛C電解 SXE 220uF 8*20	35V ± 20% 105	1.000000	PCS				C41	#3RDEC0620002	2006/01/19	2021/12/31
68	0185	:/:6	A14000136-1381	無鉛C電解 KME 100uF 6.3*11	25V ± 20% 105	1.000000	PCS				C12		2005/11/09	2020/12/31
69	0190	:/:6	A14000024-1381	無鉛C電解 KMG 10uF 5*11	50V ± 20% P=2 ,105	1.000000	PCS				C49		2001/01/01	2015/12/31
70	0200	:/:6	11032639226800	C 電解 SS 22uF 16V 4 *5	± 20% 85	1.000000	PCS			Y	C53	#3RDEC0620002	2004/06/07	2019/12/31
71	0200	:/:6	11032449226800	C 電解 MS 22uF 16V 4*5	± 20% 85	2.000000	PCS			*			2004/06/07	2019/12/31
72	0205	:/:6	A14000229-1381	無鉛C電解 SXE 120uF 5*11.5	6.3V ± 20% 105	1.000000	PCS				C45	#3RDEC0620002	2006/01/19	2021/12/31
73	0210	:/:6	11033569107800	C 電解 SC 10uF 25V 6.3*6.8	± 20% 105	2.000000	PCS				C46 C39		2004/06/07	2019/12/31
74	0220	:/:6	A12000002-0013	無鉛C 陶瓷 Z5U 1nF	1KV -20~+80%	3.000000	PCS				C43 C55 C32		2001/01/01	2015/12/31
75	0230	:/:6	A12000003-0013	無鉛C 陶瓷 Y5E 390pF	500V ± 10%	1.000000	PCS				C17		2001/01/01	2015/12/31
76	0240	:/:6	1101J839473B00	C 陶瓷 Z5V 47000pF 500V	+80-20%	1.000000	PCS				C16		2004/06/07	2019/12/31
77	0250	:/:6	1402SC33320000	TRANS 2SC3332 160V 0.7A NPN T	TO-92	1.000000	PCS				Q6		2004/06/07	2019/12/31
78	0260	:/:6	140UTC8550S000	TRANS UTC8550S 20V 0.7A PNP	D-DANK TO-92	3.000000	PCS				IC6 Q7 IC11		2004/06/07	2019/12/31
79	0270	:/:6	19000000000130	光耦合 LTV-817-A RANK DIP 4PIN	CTR=80~160%	2.000000	PCS			Y	IC2 IC9		2004/06/07	2019/12/31
80	0270	:/:6	19000000000110	光耦合 KPC817A(K1010A)	CTR=80~160%	2.000000	PCS			*			2004/06/07	2019/12/31
81	0280	:/:6	170TL431C00000	IC TL431C TO-92		3.000000	PCS			Y	IC3 IC5 IC7		2004/06/07	2019/12/31
82	0280	:/:6	170AN1431T0000	IC REGULAR AN1431T TO-92		3.000000	PCS			*			2004/06/07	2019/12/31
83	0280	:/:6	170UTC43100000	IC UTC431 4uA 2.55V	1%(Single) TO-92	3.000000	PCS			*			2004/06/07	2019/12/31
84	0280	:/:6	170UTC43100001	IC UTC431 4uA 2.55V 1%(Single)	TO-92	3.000000	PCS			*			2004/06/07	2019/12/31
85	0290	:/:6	1302HZ9C100000	DIODE ZENER HZ9C1 9V 1/2W	DO-35	1.000000	PCS				ZD6		2004/06/07	2019/12/31
86	0300	:/:6	1302HZ18200000	DIODE ZENER HZ18-2 18V 1/2W	DO-35	1.000000	PCS				ZD3		2004/06/07	2019/12/31
87	0310	:/:6	1302HZ6A300000	DIODE ZENER HZ6A3 5.6V 1/2W	DO-35	3.000000	PCS				ZD1 ZD2 ZD4		2004/06/07	2019/12/31
88	0320	:/:6	1303MCR1000060	SCR MCR100-006 0.8A 400V TO-92		1.000000	PCS			Y	IC4		2004/06/07	2019/12/31
89	0320	:/:6	1303MCR1008000	SCR MCR100-8 0.8A 600V TO-92	直腳	1.000000	PCS			*			2004/06/07	2019/12/31
90	0330	:/:6	A01000310-ZZZZ	無鉛R 金氧膜(MOF) 2W 56	± 5%	1.000000	PCS				R68		2001/01/01	2015/12/31
91	0340	:/:6	A01000328-ZZZZ	無鉛R 金氧膜(MOF) 1W 18K	± 5%	1.000000	PCS				R63		2001/01/01	2015/12/31
92	0360	:/:6	A01000298-ZZZZ	無鉛R 金氧膜(MOF) 2W 10K	± 5%	3.000000	PCS				R29 R31 R2		2001/01/01	2015/12/31
93	0370	:/:6	A01000416-ZZZZ	無鉛R 金氧膜(MOF) 2W 0.12	± 5%	2.000000	PCS				R4 R8		2001/01/01	2015/12/31

Approved By: 林秀芬

Checked By: 蔡佳紘

Prepared By: 陳麗敏 吳珮勤

NO:RD-F-004-B

PrintDate: 2006/01/19

PrintTime: 16:25:51

卓智電子股份有限公司  
YCL ELECTRONIC CO., LTD

BOM211

Page: 4 / 7

BILL OF MATERIAL

Parent-Parts No: DHR004A

Description: DHR-004A

Batch Qty: 1.00

Modified-Date: 2006/01/19

LastVersion: 3

Confirm: Yes

Specification:

Seq	Item	Lvl	Child-Parts Number	Child-Parts Description I	Description II	Usage Qty	UM	Sp	LOT	Msrc	Location	ECN Number	Valid-Date	Invalid-Date
94	0380	:/:6	A01000012-ZZZZ	無鉛R 金氧膜(MOF) 2W 100	± 5%	1.000000	PCS				R41		2001/01/01	2015/12/31
95	0390	:/:6	A01000014-ZZZZ	無鉛R CARBON 1/4W 100	± 5%	1.000000	PCS				R64		2001/01/01	2015/12/31
96	0400	:/:6	10006100001600	R 金屬膜(MOF) 1/2W 100 5%		1.000000	PCS				R10		2004/06/07	2019/12/31
97	0410	:/:6	A01000070-ZZZZ	無鉛R CARBON 1/8W 100	± 5%	1.000000	PCS				R20		2001/01/01	2015/12/31
98	0420	:/:6	A01000008-ZZZZ	無鉛R 金氧膜(MOF) 1/2W 30	± 5%	1.000000	PCS				R13		2001/01/01	2015/12/31
99	0425	:/:6	1101B999332800	C 陶瓷 3300pF 250V 12 P=7.5	20% Y2	2.000000	PCS			Y	C51 C61		2004/06/08	2019/12/31
100	0425	:/:6	1101B251332700-243	C 陶瓷 5SF332MT252A77 3300pF	Y5V 250V ± 20% Y2	2.000000	PCS			*			2004/06/08	2019/12/31
101	0430	:/:6	A01000007-ZZZZ	無鉛R CARBON 1/4W 4.7	± 5%	1.000000	PCS				R58		2001/01/01	2015/12/31
102	0440	:/:6	21100080500000	跳線銅線線0.8 *5mm 10m		5.000000	PCS				J1 J2 J3 J4 J5		2004/06/07	2019/12/31
103	0450	:/:6	28700000000430	端子 黃銅1*13.7	鍍全錫(光澤錫)3-5um	1.000000	PCS				FOR TP		2004/06/07	2019/12/31
104	0460	:/:6	21000081000000	跳線 銅鍍錫0.8*10		0.000001	PCS				FOR J6 J8		2004/06/07	2019/12/31
105	0463	:/:6	60010000000130	管 熱縮套管 F32 5/2.5		0.140000	M				FOR R2 R4 R8 R29 R31 R41 R68		2004/06/25	2019/12/31
106	0464	:/:6	60003AWG18L000	管 套管AWG 18型 鐵氟龍		0.140000	M				FOR R2 R4 R8 R29 R31 R41 R68		2004/06/25	2019/12/31
107	0465	:/:6	60010000000090	管 熱縮套管 F32 16/8		0.040000	M				FOR L1L2		2004/12/27	2019/12/31
108	0466	:/:6	7654000053	L AHR-002-L3		1.000000	PCS				L3		2004/06/09	2019/12/31
109	0010	:/:7	400000000004950	CORE T94-75-TAF200 AL=60nH	± 10% 23.9*14.2*7.9	1.000000	PCS						2003/10/03	2018/12/31
110	0020	:/:7	2002100450E00N	2UEW 0.45mm N		0.001720	KG						2003/10/03	2018/12/31
111	0030	:/:7	E1000003Y-1356	無鉛/毒 TAPE NO.1350F 5.5mm	5.5*0.051-0.076T黃色	0.000712	R						2001/01/01	2015/12/31
112	0470	:/:6	76540000041	L DHR-003-01-L1L7		2.000000	PCS				L1L2		2004/06/07	2019/12/31
113	0010	:/:7	400000000000460	CORE T68-75-TAF200	AL=43.5nH± 10%	2.000000	PCS						2002/11/04	2017/12/31
114	0020	:/:7	B00000049Y-0027	無鉛漆包線 2UEW 0.50mm Y		0.004006	KG					RDER0520077	2001/01/01	2015/12/31
115	0480	:/:6	76540000064	TR DHR-004-T1		1.000000	PCS				T1		2004/06/09	2019/12/31
116	0010	:/:7	400000000004960	CORE MZ4 EERLW35/42	AL=2950nH± 25%	2.000000	PC			Y			2003/10/16	2018/12/31
117	0010	:/:7	400000000006310	CORE ER35W/21/11 NO GAP	Ui=2300+/-20%	2.000000	PCS			*			2003/10/16	2018/12/31
118	0020	:/:7	430000000000890	BOBBIN TF-3511(ERL35) 16PIN	1SEC PHENOLIC	1.000000	PCS						2003/10/16	2018/12/31
119	0030	:/:7	B00000049G-0027	無鉛漆包線 2UEW 0.50mm G		0.010752	KG					RDER0520077	2001/01/01	2015/12/31
120	0040	:/:7	2002100260E00N	2UEW 0.26mm N		0.004290	KG						2003/10/16	2018/12/31
121	0050	:/:7	2002100450E00R	2UEW 0.45mm R		0.000600	KG						2003/10/16	2018/12/31
122	0053	:/:7	2002100400E00N	2UEW 0.40mm N		0.001665	KG						2004/12/28	2019/12/31
123	0055	:/:7	302000000003040	銅箔片 170*19*0.2t		2.000000	PCS						2003/10/17	2018/12/31
124	0058	:/:7	302000000000670	銅箔貼片 70*15*0.1t	ED-RDU-002	2.000000	PCS						2004/12/28	2019/12/31

Approved By: 林秀芬

Checked By: 蔡佳紘

Prepared By: 陳麗敏 吳珮勤

NO:RD-F-004-B

PrintDate: 2006/01/19

PrintTime: 16:25:51

卓智電子股份有限公司  
YCL ELECTRONIC CO., LTD

BOM211

BILL OF MATERIAL

Page: 5 / 7

Parent-Parts No: DHR004A

Description: DHR-004A

Batch Qty: 1.00

Modified-Date: 2006/01/19

LastVersion: 3

Confirm: Yes

Specification:

Seq	Item	Lvl	Child-Parts Number	Child-Parts Description I	Description II	Usage Qty	UM	Sp	LOT	Msrc	Location	ECN Number	Valid-Date	Invalid-Date
125	0060	1	1000000000760	TAPE NO.1350 22*0.051-0.076T		0.001136	R						2003/10/16	2018/12/31
126	0070	1	1000028Y-1356	無鉛/毒 TAPE NO.1350F 12.0mm	12.0*0.051-0.076T黃色	0.007136	R					RDER0520077	2001/01/01	2015/12/31
127	0080	1	1000000000700	TAPE NO.44 3*0.228-0.304T (2L)		0.025611	R						2003/10/16	2018/12/31
128	0090	1	1000033Y-1356	無鉛/毒 TAPE NO.1350F 26.5mm	26.5*0.051-0.076T黃色	0.015682	R					RDER0520077	2001/01/01	2015/12/31
129	0095	1	790000000000053	標籤 字樣"DANGER" 25*10mm	黃色銅版紙黃底紅字	1.000000	PCS						2003/10/17	2018/12/31
130	0100	1	790000000000158	標籤 字樣"HI-POT OK" 10	反銀龍銀底黑字	1.000000	PCS						2003/10/16	2018/12/31
131	0110	1	790000000000159	標籤 字樣"CAUTION." 15*8mm	反銀龍銀底黑字	1.000000	PCS						2003/10/16	2018/12/31
132	0120	1	760003AWG18L000	管 套管AWG 18L型 鐵氟龍		0.080000	M						2003/10/16	2018/12/31
133	0130	1	760003AWG20L000	管 套管AWG 20L型 鐵氟龍		0.040000	M						2003/10/16	2018/12/31
134	0140	1	780000000000101	膠劑類 凡立水BC-359		0.000020	DR			Y			2003/10/16	2018/12/31
135	0140	1	780000000000098	無溶劑型絕緣樹脂(凡立水) 468-2		0.000020	DR			*			2003/10/16	2018/12/31
136	0150	1	780000000000102	膠劑類 稀釋劑T-100		0.000027	DR						2003/10/16	2018/12/31
137	0160	1	7900000000019100	標籤 字樣7654000064 14*4mm	ED-MBS-147 透明龍票	1.000000	PCS						2004/06/23	2019/12/31
138	0490	1	60565400028-Q1	DHR-004 PCB-Q1		1.000000	PCS						2004/06/09	2019/12/31
139	0010	1	7160IRFP250N000	MOS IRFP250N 200V 30A 0.075	TO-247AC	1.000000	PCS				Q1		2004/06/04	2019/12/31
140	0020	1	750000000000250	絕緣片 矽膠SLTO-3P 26*20*0.3t		1.000000	PCS				FOR Q1		2004/06/04	2019/12/31
141	0030	1	730200000000610	螺絲丸 M3*10 五彩		1.000000	PCS				FOR Q1		2004/06/04	2019/12/31
142	0040	1	730200000000060	彈簧華司 M3		1.000000	PCS				FOR Q1		2004/06/04	2019/12/31
143	0050	1	730100000000560	散熱片 ED-FDH-100	AL t=3.00	1.000000	PCS				FOR Q1		2004/06/21	2019/12/31
144	0500	1	60565400028-Q8	DHR-004 PCB-Q8		1.000000	PCS						2004/06/09	2019/12/31
145	0010	1	7160IRL31030000	MOS IRL3103 30V 56A N TO-220		1.000000	PCS				Q8		2003/10/16	2018/12/31
146	0020	1	730100000000180	散熱片 AL6061 30*23.5*16.9mm	公差0.2mm	1.000000	PCS				FOR Q8		2003/10/16	2018/12/31
147	0030	1	750000000000240	絕緣片 矽膠SLTO-220 19*13*0.3t		1.000000	PCS				FOR Q8		2003/10/16	2018/12/31
148	0040	1	730200000000110	耐燃絕緣粒 BHTO-220		1.000000	PCS				FOR Q8		2003/10/16	2018/12/31
149	0050	1	730200000000020	螺絲丸 M3*8 五彩		1.000000	PCS				FOR Q8		2003/10/16	2018/12/31
150	0060	1	730200000000060	彈簧華司 M3		1.000000	PCS				FOR Q8		2003/10/16	2018/12/31
151	0510	1	60565400028-D3D4Q2Q5	DHR-004 PCB-D3D4Q2Q3Q4Q5		1.000000	PCS						2004/06/09	2019/12/31
152	0010	1	7A31000180-1330	無鉛DIODE SCHOKY SB3040PT	40V/ 30A ;TO-3P	2.000000	PCS				D3 D4	RDEC0520077	2001/01/01	2015/12/31
153	0020	1	7160IRL31030000	MOS IRL3103 30V 56A N TO-220		4.000000	PCS				Q2 Q3 Q4 Q5		2004/06/01	2019/12/31
154	0035	1	730200000000020	螺絲丸 M3*8 五彩		4.000000	PCS				FOR Q2 Q3 Q4 Q5		2004/06/21	2019/12/31
155	0038	1	730200000000610	螺絲丸 M3*10 五彩		2.000000	PCS				FOR D3 D4		2004/06/23	2019/12/31

Approved By: 林秀芬

Checked By: 蔡佳紘

Prepared By: 陳麗敏 吳珮勤

NO:RD-F-004-B

PrintDate: 2006/01/19

PrintTime: 16:25:51

卓智電子股份有限公司  
YCL ELECTRONIC CO., LTD

BOM211

Page: 6 / 7

BILL OF MATERIAL

Parent-Parts No: DHR004A

Description: DHR-004A

Batch Qty: 1.00

Modified-Date: 2006/01/19

LastVersion: 3

Confirm: Yes

Specification:

Seq	Item	Lvl	Child-Parts Number	Child-Parts Description I	Description II	Usage Qty	UM	Sp	LOT	Msrc	Location	ECN Number	Valid-Date	Invalid-Date
156	0040	:/:/750000000000250		絕緣片 矽膠SLT0-3P 26*20*0.3t		2.000000	PCS				FOR D3 D4		2004/06/04	2019/12/31
157	0050	:/:/750000000000240		絕緣片 矽膠SLT0-220 19*13*0.3t		4.000000	PCS				FOR Q2 Q3 Q4 Q5		2004/06/04	2019/12/31
158	0060	:/:/730200000000060		彈簧華司 M3		6.000000	PCS				FOR D3D4Q2Q3Q4Q5		2004/06/04	2019/12/31
159	0070	:/:/730200000000110		耐燃絕緣粒 BHT0-220		4.000000	PCS				FOR Q2Q3Q4Q5		2004/06/04	2019/12/31
160	0080	:/:/730100000000550		散熱片 ED-FDH-100-A	AL t=3.00	1.000000	PCS				FOR D3 D4 Q2 Q3 Q4 Q5		2004/06/21	2019/12/31
161	0520	:/:/60565400028-SMD		DHR-004 PCB-SMD		1.000000	PCS						2004/06/09	2019/12/31
162	0010	:/:/7A02000360-ZZZZ		無鉛 SMDR 1206 240K ± 5%		2.000000	PCS				R22 R23		2001/01/01	2015/12/31
163	0020	:/:/7A02000222-ZZZZ		無鉛 SMDR 1206 1K ± 5%		2.000000	PCS				R5 R61		2001/01/01	2015/12/31
164	0030	:/:/7A02000198-ZZZZ		無鉛 SMDR 1206 0 ± 5%		2.000000	PCS				R60 R18		2001/01/01	2015/12/31
165	0040	:/:/7A02000201-ZZZZ		無鉛 SMDR 1206 24K ± 5%		1.000000	PCS				R59		2001/01/01	2015/12/31
166	0050	:/:/7A02000376-ZZZZ		無鉛 SMDR 1206 510 ± 5%		2.000000	PCS				R62*2		2001/01/01	2015/12/31
167	0060	:/:/7A02000199-0297		無鉛 SMDR 1206 51 5%		1.000000	PCS				R70		2001/01/01	2015/12/31
168	0070	:/:/7A02000228-ZZZZ		無鉛 SMDR 1206 100 ± 5%		1.000000	PCS				R47		2001/01/01	2015/12/31
169	0080	:/:/7A02000371-ZZZZ		無鉛 SMDR 1206 39K ± 5%		1.000000	PCS				R43		2001/01/01	2015/12/31
170	0090	:/:/7A02000364-ZZZZ		無鉛 SMDR 1206 30 ± 5%		2.000000	PCS				R45 R48		2001/01/01	2015/12/31
171	0100	:/:/7A02000344-ZZZZ		無鉛 SMDR 1206 15 ± 5%		1.000000	PCS				R66		2001/01/01	2015/12/31
172	0110	:/:/7A02000106-ZZZZ		無鉛 SMDR 0805 1K ± 5%		5.000000	PCS				R30 R26 R11 R21 R38		2001/01/01	2015/12/31
173	0120	:/:/7A02000179-ZZZZ		無鉛 SMDR 0805 20K ± 5%		1.000000	PCS				R7		2001/01/01	2015/12/31
174	0130	:/:/7A02000148-ZZZZ		無鉛 SMDR 0805 100 ± 5%		8.000000	PCS				R27R71R72R73R17R36R35R9		2001/01/01	2015/12/31
175	0140	:/:/7A02000256-ZZZZ		無鉛 SMDR 0805 33K ± 5%		3.000000	PCS				R16 R24 R51		2001/01/01	2015/12/31
176	0150	:/:/7A02000133-ZZZZ		無鉛 SMDR 0805 4.7K ± 5%		3.000000	PCS				R6 R14 R34		2001/01/01	2015/12/31
177	0160	:/:/7A02000138-ZZZZ		無鉛 SMDR 0805 5.6K ± 5%		2.000000	PCS				R57 R37		2001/01/01	2015/12/31
178	0170	:/:/7A02000151-ZZZZ		無鉛 SMDR 0805 10K ± 5%		2.000000	PCS				R28 R44		2001/01/01	2015/12/31
179	0180	:/:/7A02000182-ZZZZ		無鉛 SMDR 0805 22 ± 5%		1.000000	PCS				R49		2001/01/01	2015/12/31
180	0190	:/:/7A02000161-ZZZZ		無鉛 SMDR 0805 120K ± 5%		1.000000	PCS				R42		2001/01/01	2015/12/31
181	0200	:/:/7A02000218-ZZZZ		無鉛 SMDR 0805 300K ± 5%		1.000000	PCS				R40		2001/01/01	2015/12/31
182	0210	:/:/7A02000297-ZZZZ		無鉛 SMDR 0805 82K ± 5%		2.000000	PCS				R50 R55		2001/01/01	2015/12/31
183	0220	:/:/7A02000164-ZZZZ		無鉛 SMDR 0805 150 ± 5%		1.000000	PCS				R54		2001/01/01	2015/12/31
184	0230	:/:/7A02000121-ZZZZ		無鉛 SMDR 0805 2.4K ± 5%		1.000000	PCS				R15		2001/01/01	2015/12/31
185	0240	:/:/7A02000155-ZZZZ		無鉛 SMDR 0805 10.5K ± 1%		1.000000	PCS				R52		2001/01/01	2015/12/31
186	0250	:/:/7A02000129-ZZZZ		無鉛 SMDR 0805 3.3K ± 5%		1.000000	PCS				R19		2001/01/01	2015/12/31

Approved By: 林秀芬

Checked By: 蔡佳紘

Prepared By: 陳麗敏 吳珮勤

NO:RD-F-004-B

PrintDate: 2006/01/19

PrintTime: 16:25:51

卓智電子股份有限公司  
YCL ELECTRONIC CO., LTD

BOM211

Page: 7 / 7

BILL OF MATERIAL

Parent-Parts No: DHR004A

Description: DHR-004A  
Specification:

Batch Qty: 1.00

Modified-Date: 2006/01/19

LastVersion: 3

Confirm: Yes

Seq	Item	Lvl	Child-Parts Number	Child-Parts Description I	Description II	Usage Qty	UM	Sp	LOT	Msrc	Location	ECN Number	Valid-Date	Invalid-Date
187	0255	:/:/7A	02000112-ZZZZ	無鉛 SMDR 0805 1.5K ± 5%		1.000000	PCS		<input type="checkbox"/>		R69		2001/01/01	2015/12/31
188	0260	:/:/71	1175749104512	SMDC 1206 X7R 100000pf 50V 10%		3.000000	PCS		<input type="checkbox"/>	Y	C50 C31 C7		2004/06/04	2019/12/31
189	0260	:/:/7A	17000006-ZZZZ	無鉛SMDC 1206 X7R 104K 100nF	50V ± 10%	3.000000	PCS		<input type="checkbox"/>	*		RDER0520077	2001/01/01	2015/12/31
190	0270	:/:/7A	17000403-ZZZZ	無鉛SMDC 1206 Y5U 105M 1uF	50V ± 20%	1.000000	PCS		<input type="checkbox"/>	Y	C27		2001/01/01	2015/12/31
191	0270	:/:/7A	17000387-ZZZZ	無鉛SMDC 1206 X7R 105K 1uF	50V ± 10%	1.000000	PCS		<input type="checkbox"/>	*		RDER0520077	2001/01/01	2015/12/31
192	0280	:/:/7A	17000089-ZZZZ	無鉛SMDC 0805 X7R 104K 100nF	50V ± 10%	8.000000	PCS		<input type="checkbox"/>		C26C19C24C1C22C33C18C34	#3RDEC0620002	2001/01/01	2015/12/31
193	0285	:/:/7A	17000401-ZZZZ	無鉛SMDC 1206 Y5V 475Z 4.7uF	25V -20~+80%	1.000000	PCS		<input type="checkbox"/>		C30	#3RDEC0620002	2006/01/19	2021/12/31
194	0290	:/:/7A	17000079-ZZZZ	無鉛SMDC 0805 Y5V 105Z 1uF	50V -20~+80%	2.000000	PCS		<input type="checkbox"/>		C2 C58		2001/01/01	2015/12/31
195	0300	:/:/7A	17000296-ZZZZ	無鉛SMDC 0805 X7R 102K 1nF	50V ± 10%	1.000000	PCS		<input type="checkbox"/>		C35		2001/01/01	2015/12/31
196	0310	:/:/7A	17000041-ZZZZ	無鉛SMDC 0805 NPO 101J 100 pF	50V ± 5%	1.000000	PCS		<input type="checkbox"/>		C20		2001/01/01	2015/12/31
197	0320	:/:/7A	17000254-ZZZZ	無鉛SMDC 0805 NPO 471J 470pF	50V ± 5%	1.000000	PCS		<input type="checkbox"/>		C10		2001/01/01	2015/12/31
198	0330	:/:/7A	17000222-ZZZZ	無鉛SMDC 0805 NPO 152J 1.5nF	50V ± 5%	1.000000	PCS		<input type="checkbox"/>		C9		2001/01/01	2015/12/31
199	0340	:/:/7A	17000303-ZZZZ	無鉛SMDC 0805 X7R 224J 220nF	50V ± 5%	1.000000	PCS		<input type="checkbox"/>	Y	C59		2001/01/01	2015/12/31
200	0340	:/:/7A	17000304-ZZZZ	無鉛SMDC 0805 X7R 224K 220nF	50V ± 10%	1.000000	PCS		<input type="checkbox"/>	*		RDER0520077	2001/01/01	2015/12/31
201	0350	:/:/7A	17000010-ZZZZ	無鉛SMDC 0805 X7R 103K 10nF	50V ± 10%	1.000000	PCS		<input type="checkbox"/>		C8		2001/01/01	2015/12/31
202	0360	:/:/71	171LTC4350CGN0	SMDIC LTC-4350CGN 16PIN		1.000000	PCS		<input type="checkbox"/>		IC8		2004/06/04	2019/12/31
203	0370	:/:/71	1312RLZ18C0000	SMD ZENER RLZ18C 18V 0.4W		1.000000	PCS		<input type="checkbox"/>		ZD7		2004/06/04	2019/12/31
204	0380	:/:/71	1310RLS4148000	SMD DIODE FAST RLS4148	0.2A 75V	1.000000	PCS		<input type="checkbox"/>		D7		2004/06/04	2019/12/31
205	0390	:/:/71	1312RLZ56B0000	SMD ZENER RLZ5.6B 5.6V 0.5W	LL-34	1.000000	PCS		<input type="checkbox"/>		ZD5		2004/06/04	2019/12/31
206	0400	:/:/71	171UC3843BV000	IC UC3843BVD1R2 SO-8		1.000000	PCS		<input type="checkbox"/>		IC1		2004/06/23	2019/12/31
207	0410	:/:/7G	0200420C-0127	無鉛 PCB 420-C 鍍金	FR4 雙面板(132.4*120	1.000000	PCS		<input type="checkbox"/>			#3RDEC0620002	2004/06/09	2019/12/31

Approved By: 林秀芬

Checked By: 蔡佳紘

Prepared By: 陳麗敏 吳珮勤

NO:RD-F-004-B

Customer :  
 Model : DHR-004A  
 S/N : S0434100014 | P/N : | Date Code : 0142  
 Date : 01/13/2006 | Time : 13:39:20  
 Testing Time : 38.99 Sec | Result : PASS

Test Item Description	CH	Min	Max	Value	Result
FU LOAD[ 48V @ 17.00A] (100%)	1	4.800	5.100	4.982	PASS
FU LOAD[ 36V @ 17.00A] (100%)	1	4.800	5.100	4.980	PASS
FU LOAD[ 72V @ 17.00A] (100%)	1	4.800	5.100	4.982	PASS
NO LOAD[ 36V @ 0.00A] (0%)	1	4.800	5.200	5.074	PASS
NO LOAD[ 48V @ 0.00A] (0%)	1	0.000	5.200	5.074	PASS
NO LOAD[ 72V @ 0.00A] (0%)	1	0.000	5.200	5.074	PASS
OVP[ 48V @ 3.40A] (20%)	1	0.000	5.200	5.046	PASS
Line Regulation [ 36V]	1	4.800	5.200	4.982	PASS
Line Regulation [ 72V]	1	4.800	5.200	4.982	PASS
Line Regulation [ 36V ~ 72V] (%)	1	0.000	2.000	0.000%	PASS
Load Regulation [ 48V] (%)	1	0.000	3.000	0.836%	PASS
輸入電流 [ 48V] (A)	--	0.000	2.700	2.640	PASS
Efficiency [ 48V] (%)	--	65.000	100.000	66.811%	PASS
O.L.P. [ 48V / 100% ~ 200%] (%)	1	110.000	200.000	133.202%	PASS
O.L.P. [ 72V / 100% ~ 200%] (%)	1	110.000	200.000	132.180%	PASS
Short Circuit [ 48V] (V)	1	0.000	1.000	0.492	PASS
Short Circuit [ 48V] (W)	--	0.000	30.000	7.682	PASS
Drop Out (V)	--	0.000	36.000	27.000	PASS

Ripple/noise [48V/ 17.00A] 100%

80 mVPP

Customer :  
 Model : DHR-004A  
 S/N : S0434100006 | P/N : | Date Code : 0142  
 Date : 01/13/2006 | Time : 13:35:48  
 Testing Time : 40.76 Sec | Result : PASS

Test Item Description	CH	Min	Max	Value	Result
FU LOAD[ 48V @ 17.00A] (100%)	1	4.800	5.100	4.954	PASS
FU LOAD[ 36V @ 17.00A] (100%)	1	4.800	5.100	4.956	PASS
FU LOAD[ 72V @ 17.00A] (100%)	1	4.800	5.100	4.954	PASS
NO LOAD[ 36V @ 0.00A] (0%)	1	4.800	5.200	5.054	PASS
NO LOAD[ 48V @ 0.00A] (0%)	1	0.000	5.200	5.054	PASS
NO LOAD[ 72V @ 0.00A] (0%)	1	0.000	5.200	5.054	PASS
OVP[ 48V @ 3.40A] (20%)	1	0.000	5.200	5.018	PASS
Line Regulation [ 36V]	1	4.800	5.200	4.954	PASS
Line Regulation [ 72V]	1	4.800	5.200	4.954	PASS
Line Regulation [ 36V ~ 72V] (%)	1	0.000	2.000	0.000%	PASS
Load Regulation [ 48V] (%)	1	0.000	3.000	0.801%	PASS
輸入電流 [ 48V] (A)	--	0.000	2.700	2.607	PASS
Efficiency [ 48V] (%)	--	65.000	100.000	67.202%	PASS
O.L.P. [ 48V / 100% ~ 200%] (%)	1	110.000	200.000	121.604%	PASS
O.L.P. [ 72V / 100% ~ 200%] (%)	1	110.000	200.000	121.387%	PASS
Short Circuit [ 48V] (V)	1	0.000	1.000	0.468	PASS
Short Circuit [ 48V] (W)	--	0.000	30.000	2.833	PASS
Drop Out (V)	--	0.000	36.000	27.000	PASS

Ripple/noise [48V/ 17.00A] 100% 80 mVPP



卓智電子股份有限公司

YCL ELECTRONICS CO., LTD.

Tel.: +886-(0)7-745-8587 Fax.: +886-(0)7-745-9120

830 高雄縣鳳山市鳳仁路 95 號 <http://www.ycl.com.tw/>

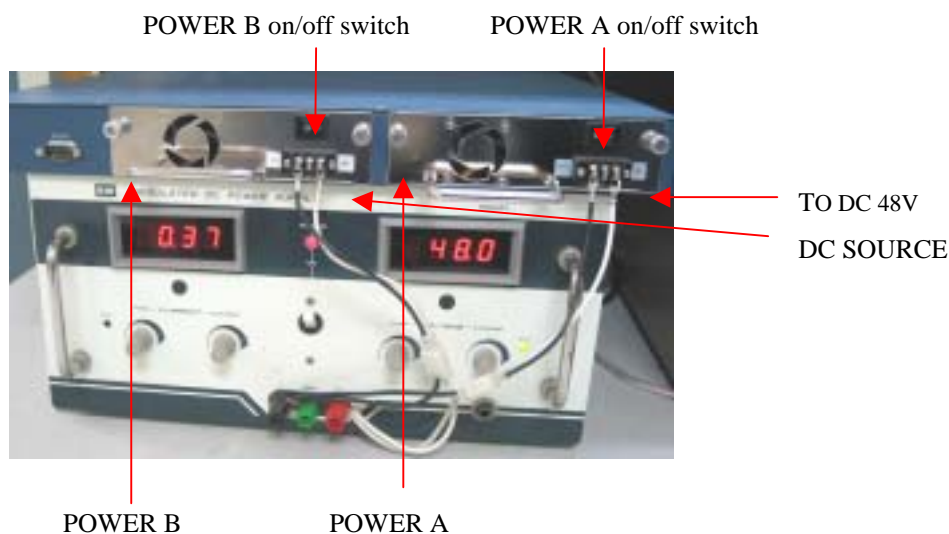
No.95, Feng Jen Road, Feng Shan City 830, Kaohsiung County, Taiwan



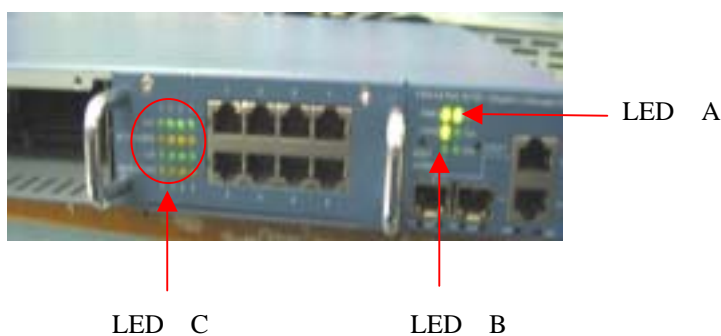
## DHR-004A 電源瞬斷測試 (客戶提供測試實體)

### POWER ON /OFF 瞬斷測試：

1. POWER A ON、POWER B ON/OFF 5 次，LED A、LED B、LED C 不可同時瞬間閃爍。
2. POWER B ON、POWER A ON/OFF 5 次，LED A、LED B、LED C 不可同時瞬間閃爍。
3. POWER A、POWER B 對調位置，重複 步驟 1、步驟 2。



### 測試實體背面



Head Office (KAOHSIUNG)

TEL: 886-7-7458587

FAX: 886-7-7459120

E-MAIL: [Sales@ycl.com.tw](mailto:Sales@ycl.com.tw)